

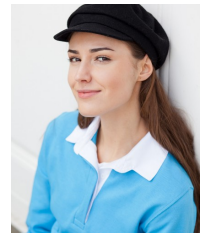


FRONT ROW & CO

HERITAGE CLOTHING

LADIES PLAIN RUGBY

FR101



Matches with:



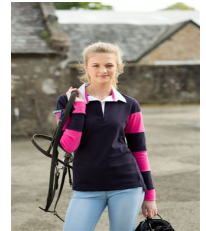
FR100



FR109



FR077



FR103

- Ladies Plain Rugby
- Lightweight plain rugby
- Traditional woven collar and cotton webbing
- Elastane re-inforced cuffs for shape retention
- Self fabric facing on side vents
- Matches men's FR100 and kid's FR109
- 100% Cotton
- 270 gsm Jersey
- XS-4XL
- 3XL and 4XL available in Black/White and Navy/White
- XS available in Black/White, Bright Pink/White and Navy/White

- 100% Cotton
- 270 gsm Jersey
- Wash at 40 degrees
- Wash Dark Colours Separately
- Wash and Dry Inside Out
- Re-shape While Damp
- Do Not Leave Folded When Damp
- Dry Out of Direct Heat and Sunlight
- Iron on Reverse

| To Fit Sizes | XS | S | M | L | XL | XXL | 3XL | 4XL |
|--------------|---------|---------|---------|---------|---------|---------|---------|-----|
| Chest cms | 75-81 | 81-87 | 87-91 | 91-96 | 96-101 | 107-112 | 112-117 | 122 |
| Chest inches | 30"-32" | 32"-34" | 34"-36" | 36"-38" | 38"-40" | 42"-44" | 44"-46" | 48" |

| Garment Measurements | XS | S | M | L | XL | XXL | 3XL | 4XL |
|----------------------|------|------|------|------|------|------|------|------|
| Chest cms | 43.0 | 44.5 | 47.0 | 49.5 | 52.0 | 54.5 | 57.0 | 59.5 |
| length cms | 64.5 | 67.0 | 67.0 | 68.0 | 69.0 | 69.0 | 70.0 | 70.0 |
| sleeve length cms | 61.5 | 62.0 | 62.0 | 62.0 | 62.0 | 62.0 | 62.0 | 62.0 |



RED/WHITE



NAVY/WHITE



NAVY/NAVY



LIGHT PINK/ WHITE



BRIGHT PINK/WHITE



BLACK/WHITE



SKY BLUE/WHITE



WHITE / WHITE



SURF BLUE / WHITE