

PR649 Coolchecker® Chef's T-shirt

Description

A casual alternative to a chef's jacket, this lightweight Coolchecker® t-shirt is designed to draw moisture away from the body and is fast drying to ensure that chef keeps fresh and cool during service.

Product Features:

- Mesh back panel for airflow
- Underarm side vent holes
- Pen pocket on left sleeve
- Crew neck styling

Available In:

XS, S, M, L, XL, 2XL, 3XL

Certifications:

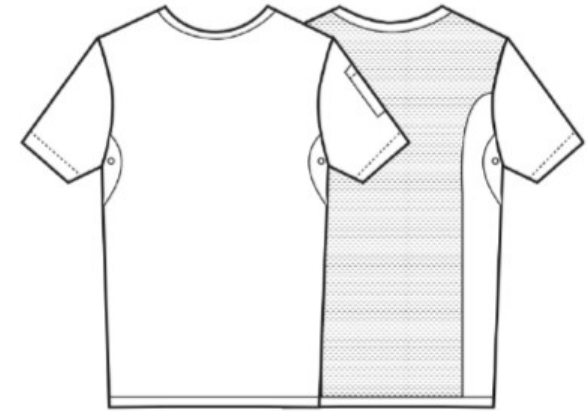


Colours:

| Colour | Pantone | C | M | Y | K |
|--------|---------|---|---|---|-----|
| Black | Black c | 0 | 0 | 0 | 100 |
| White | White | 0 | 0 | 0 | 0 |

Fabric:

100% Polyester Jersey Knit, 135gsm.



Suggested Decoration:

Screen Print, Transfer Print, Embroidery

Country of Origin:

Bangladesh

Commodity Code:

6109902000

Features:



Wash Care:



Carton Information:

| Sizes | Carton | Pack | SKU's | Carton Weight | Carton Dimensions |
|-----------|--------|------|-------|---------------|-------------------|
| All Sizes | 36 | 6 | 14 | 8kg approx. | 60cmx40cmx22cm |

Garment Sizes:

| Call size | XS | S | M | L | XL | 2XL | 3XL |
|-----------------|----|----|-----|-----|-----|-----|-----|
| Chest to fit" | 30 | 34 | 38 | 42 | 46 | 50 | 54 |
| Chest to fit cm | 77 | 87 | 96 | 107 | 117 | 126 | 136 |
| Chest actual cm | 92 | 98 | 104 | 110 | 116 | 122 | 128 |
| Back length cm | 66 | 68 | 70 | 72 | 74 | 75 | 77 |