


NS905


Pull Col rond Lyocell TENCEL™ homme



50% coton biologique peigné / 50% Lyocell TENCEL™* Jauge 14 Coupe ajustée Bord côte col tubulaire 1x1 en matière principale Finition tubulaire en matière principale bas de manches et de vêtement Tricoté en « Fully fashion » *TENCEL™ est une marque de Lenzing AG

 165 g/m² 

Tailles

 S - M - L - XL - XXL - 3XL

Informations Complémentaires

Logistique

 5  20

Pays d'origine

 BD - Bangladesh

Code douanier

 61103099

Conditions de lavage

Couleurs

 Beige Sand Heather  Navy Blue  Organic Khaki Heather

Certifications

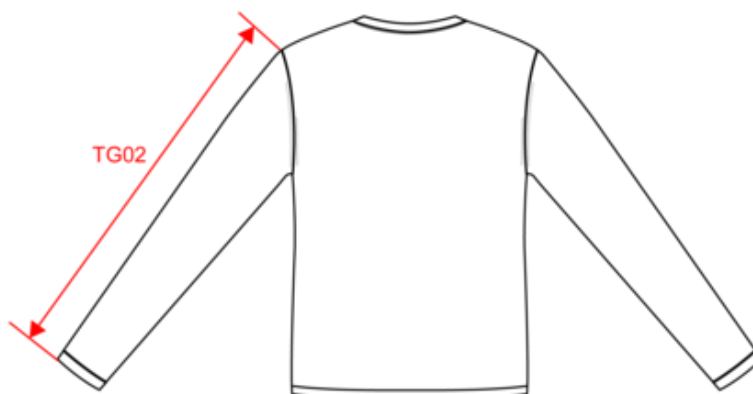
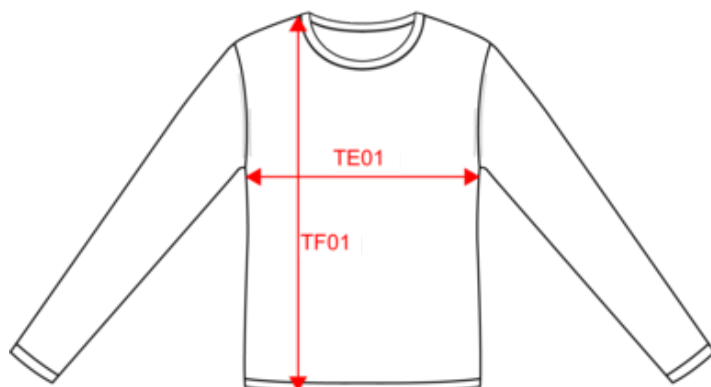


Made with 50% Organic materials.
Certified by Ecocert Greenlife.
EGL N°183963 / TOPTEX Belgique

Made with 50% Organic materials.
Certified by Ecocert Greenlife.
EGL N°183960 / TOPTEX France

NS905
Pull Col rond Lyocell TENCEL™ homme

Dimensions (cm)



Mesures en cm	S	M	L	XL	XXL	3XL
TE01 - 1/2 largeur poitrine à 1.5cm de l'emmanchure	50.00	53.00	56.00	59.00	62.00	65.00
TF01 - Hauteur totale de l'HSP	70.00	72.00	74.00	76.00	78.00	80.00
TG02 - Longueur manche longue	65.00	66.00	67.00	68.00	69.00	70.00

NS905

Pull Col rond Lyocell TENCEL™ homme

Informations Couleurs



Beige Sand Heather
 RVB :
 Pantone C : Based on 7501C
 Pantone TCX : 13-1012TCX



Navy Blue
 RVB : 41,45,57
 Pantone C : 433C
 Pantone TCX : 19-4010TCX



Organic Khaki Heather
 RVB :
 Pantone C : Based on 418C
 Pantone TCX : Based on 19-0307TCX

Logistique



Sizes	Width (cm)	Height (cm)	Length (cm)	Net weight (kg)	Gross weight (kg)	Pieces/Box	Pieces/Bundle
S	40.00	11.00	60.00	3.74000	5.74000	20	5
M	40.00	11.00	60.00	4.04000	6.04000	20	5
L	40.00	11.00	60.00	4.35000	6.35000	20	5
XL	40.00	13.00	60.00	4.67000	6.67000	20	5
XXL	40.00	13.00	60.00	5.00000	7.00000	20	5
3XL	40.00	13.00	60.00	5.35000	7.35000	20	5