

KARIBAN

REFERENCE : K582

SIZES : S_M_L_XL_XXL_3XL_4XL

COMPOSITION :

Main fabric : Bonded polyester micro polarfleece / polyester sherpa - 360 1st color for outer layer

2nd color for inner layer 100%polyester

Fabric 1 : Polyester micropolar fleece - 170 For under collar, inner collar band, under pocket flaps, inner cuffs and sleeve tabs 100%polyester

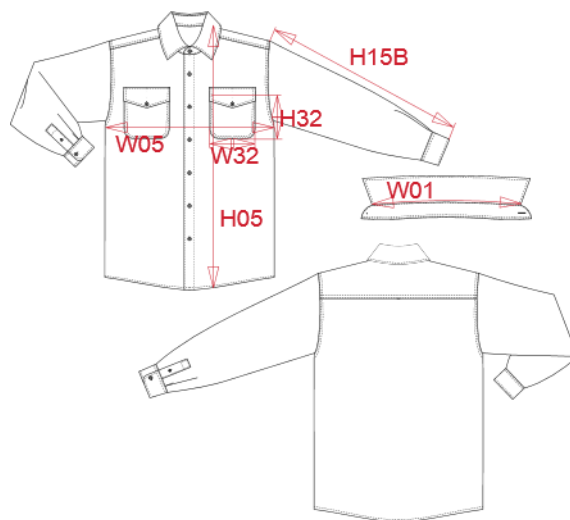
WEIGHT :

Main fabric : 360 gsm

Fabric 1 : 170 gsm

ARTICLE WEIGHT :

640 gr/pc



DESCRIPTION
Français : Surchemise polaire doublée sherpa
English : Sherpa-lined fleece overshirt
Nederlands : Overhemd van fleece met sherpavoering
Deutsch : Fleece-Hemdjacke mit Sherpa-Futter
Español : Sobrecamisa polar con forro de sherpa
Italiano : Giacca-camicia in pile foderata in sherpa
Português : Camisa polar com forro em sherpa

COLORS	PANTONE SERIGRAPHIE
Navy / Storm grey	433C / 425C
Dark khaki / Storm grey	418C / 425C

MEASUREMENT							
Description	S	M	L	XL	XXL	3XL	4XL
W01 (M) Longueur encolure / Neckline length	41,75	43	44,25	45,50	46,75	48	49,25
H05 (M) Hauteur totale / Total height	75,50	77,50	79,50	81,50	83,50	85,50	87,50
W05 (M) 1/2 largeur poitrine / 1/2 chest width	54	57	60	63	66	69	72
H15B (M) Longueur manche avec poignet / Sleeve length with cuff	66	67	68	69	70	71	72
H32 (M) Hauteur poche devant / Front pocket height	13	13	14	14	15	15	15
W32 (M) Largeur poche devant / Front pocket width	12	12	13	13	14	14	14

CARE LABEL

PACKING	
Box	10 pcs/box S => L:60cm W:40cm H:27cm NW:5kg GW:6.5kg M => L:60cm W:40cm H:27cm NW:5.5kg GW:7kg L => L:60cm W:40cm H:27cm NW:6kg GW:7.5kg XL => L:60cm W:40cm H:29cm NW:6.5kg GW:8kg XXL => L:60cm W:40cm H:29cm NW:7kg GW:8.5kg 3XL => L:60cm W:40cm H:29cm NW:7.5kg GW:9kg 4XL => L:60cm W:40cm H:29cm NW:8kg GW:9kg