

# KARIBAN

REFERENCE : K491

SIZES : S\_M\_L\_XL\_XXL\_3XL

**COMPOSITION :**

Main fabric : French Terry Organic cotton / Polyester fleece  
80/20 - 300 OCS Blended certified

For body 80%organic cotton / 20%polyester

Main fabric : French Terry Organic cotton / Polyester fleece  
80/20 - 300 OCS Blended certified

For sleeves 80%organic cotton / 20%polyester

**WEIGHT :**

Main fabric : 300 gsm

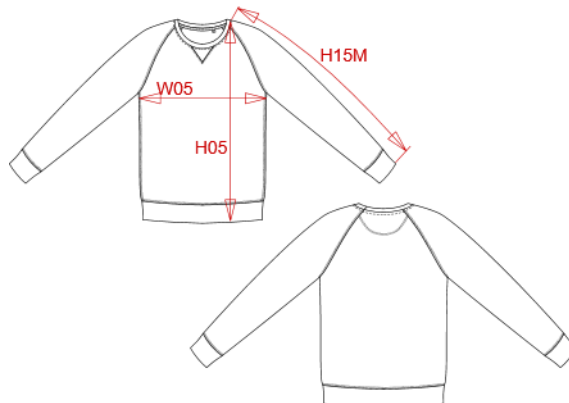
Main fabric : 300 gsm

**TECHNICAL DETAIL :**

LST (Low Shrinkage Terry)

**ARTICLE WEIGHT :**

445 gr/pc



DESCRIPTION
<b>Français :</b> Sweat-shirt BIO bicolore col rond manches raglan homme
<b>English :</b> Men's two-tone organic crew neck raglan sleeve sweatshirt
<b>Nederlands :</b> Tweekleurige herensweater BIO ronde hals raglanmouwen
<b>Deutsch :</b> Zweifarbiges Herren-Sweatshirt BIO mit Rundhalsausschnitt und Raglanmangeln
<b>Español :</b> Sudadera Bi-color algodón orgánico Cuello redondo Mangas raglan
<b>Italiano :</b> Felpa uomo BIO bicolore girocollo e manica raglan
<b>Português :</b> Sweatshirt BIO bicolor de homem com decote redondo e mangas

COLORS	PANTONE SERIGRAPHIE
Grey heather / Black	Based on 417C / Black
Grey heather / Navy	Based on 417C / 433C
Fr. navy heather / Grey heather	Based on 432C / 417C
Wine heather / Grey heather	Based on 497C / 417C

MEASUREMENT						
Description	S	M	L	XL	XXL	3XL
<b>H05 (M)</b> Hauteur totale / Total height	71	73	75	77	79	81
<b>W05 (M)</b> 1/2 largeur poitrine à 1.5cm de l'emmanchure / 1/2 chest width at 1.5cm below armhole	52	55	58	61	64	67
<b>H15M (M)</b> Longueur manche longue raglan / Long raglan sleeve length	76	77,75	79,50	81,25	83	84,75

CARE LABEL

PACKING	
Box	16 pcs / box S => L:60cm W:40cm H:20cm GW:8.0kg NW:6.7kg M => L:60cm W:40cm H:20cm GW:8.3kg NW:7.0kg L => L:60cm W:40cm H:20cm GW:8.7kg NW:7.4kg XL => L:60cm W:40cm H:22cm GW:9.4kg NW:8.0kg XXL => L:60cm W:40cm H:22cm GW:9.7kg NW:8.3kg 3XL => L:60cm W:40cm H:24cm GW:10.5kg NW:9.0kg